

NER/ER Electric Chain Hoists

Extreme Duty Motor

Increased performance through 60 minute duty rating, H4 classification, Class B insulation, cooling fins, and standard thermal motor protection. Offers higher horsepower than most competitors.

External Motor Fan

Functions to quickly eliminate motor and brake heat. This results in improved hoist duty rating and greatly lengthens brake life. Motor is totally enclosed, fan cooled (TEFC).

Pull-Rotor Motor Brake

Extremely durable and reliable, this advanced design contains no brake coil to fail like conventional disc brakes.

Compact Aluminum Body

Die-cast body is lightweight and offers low headroom—one of the best in the industry. Paint is electrostatically applied.

Durable Push-Button Pendant

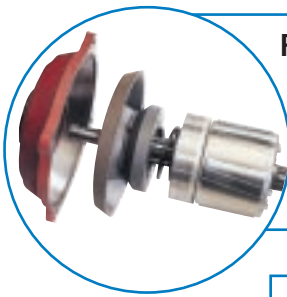
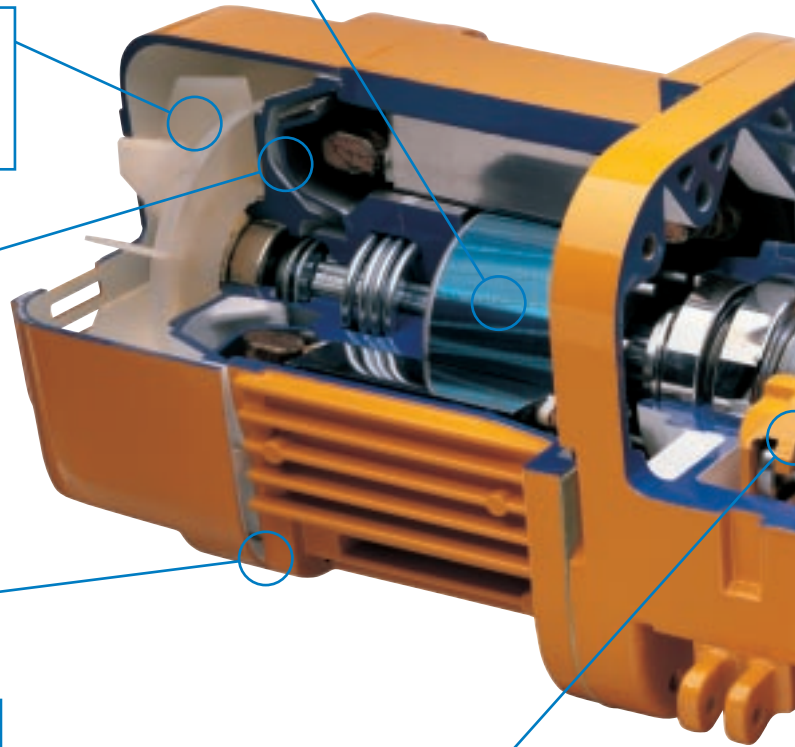
Easy to use, one-handed operation. Rated IP65. Standard control voltage is 110V. Strain relief wire is molded to pendant cord for added support and dependability.

Forged Carbon Steel Hooks

Under excessive loads will open gradually and not fracture. Ball bearings produce smooth rotation. Bottom hook will swivel 360 degrees. Heavy-duty hook latches are standard.

Unique Chain Guide

Provides quiet and smooth guiding of chain. Easily replaced without disassembly of hoist. Heavy cast iron construction for improved wear versus stamped steel design offered by many manufacturers.



Load Sheave

Deep-groove pockets fully support the load chain during operation. Reduces vibration and chain wear and provides a true vertical lift.

Long Life Friction Clutch

Protects hoist from damage and prevents overwinding. ER Series couples Weston-style load brake with friction clutch.

Completely Sealed Body

Suitable for both indoor and outdoor applications, including harsh environments. Gaskets throughout the hoist provide for an IP55 rating.

Heat Treated Helical and Spur Gears

Precision machined for long life. Oil bath lubrication results in a quiet, smooth, cool operation.

Count Hour Meter

This maintenance feature, supplied as standard on the ER Series hoists, tracks motor starts, running time and usage history by instant digital display. Meter operates independently of the hoist.

Easy Maintenance Control Panel

Simple layout of controls and a single swing-out panel. Hinged controller cover provides standard wiring diagram and allows fast on-site access.

Superior Quality Chain

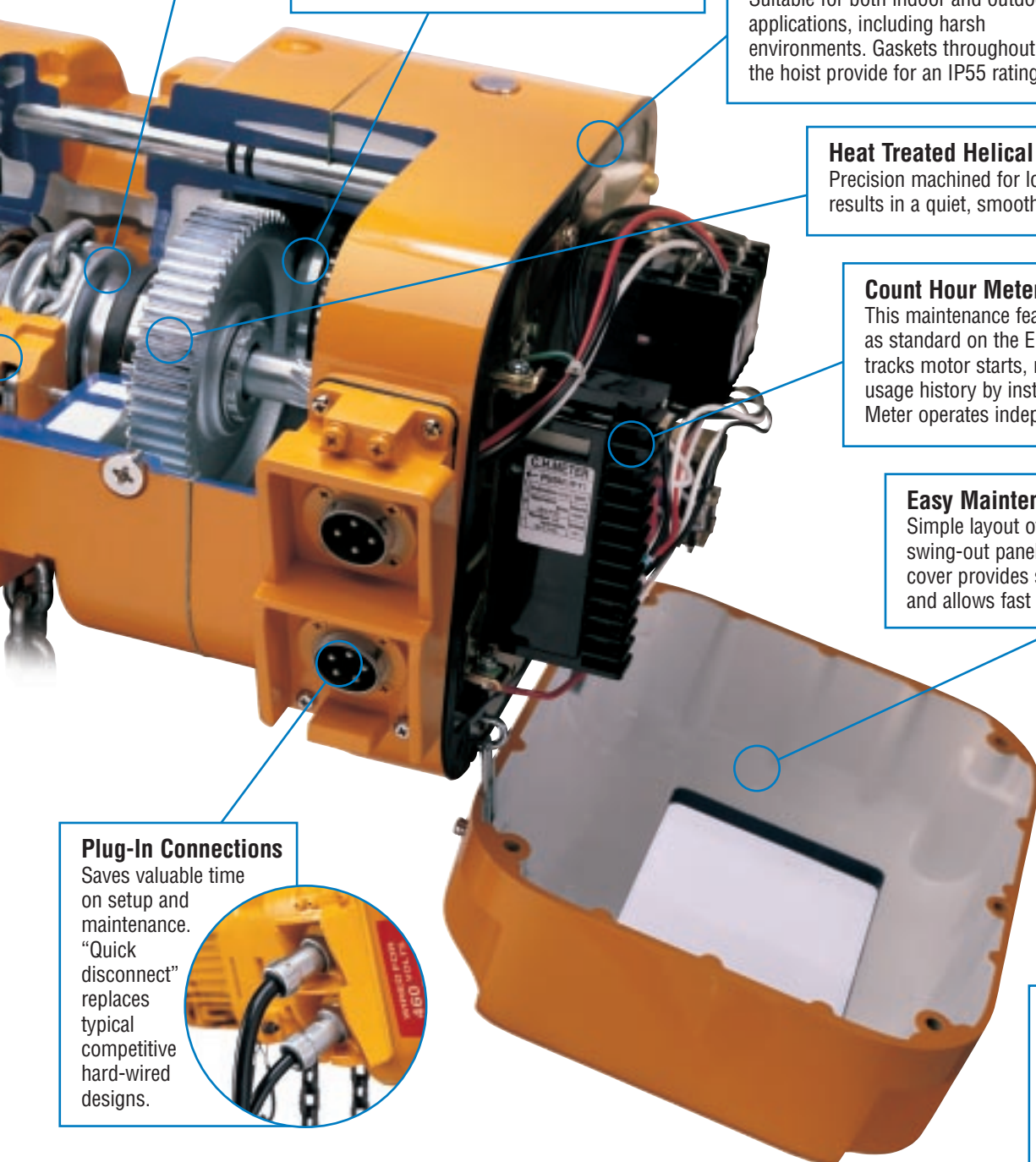
Precision gauged, Grade 80, nickel-plated load chain is heat treated for wear resistance and extended life. Single fall available through 3 Ton.

Operating Conditions

Recommended for -4° to +104°F and humidity of 85% or less.

Plug-In Connections

Saves valuable time on setup and maintenance. "Quick disconnect" replaces typical competitive hard-wired designs.



MR Motorized Trolleys

Built-In Drop Stops

Important feature provides additional security for the operator and the equipment.



Sealed Protection

Appropriate for both indoor and outdoor applications, including harsh environments. Gaskets throughout the trolley provide for an IP55 rating.

Pendant Plug-In Connections

Saves valuable time on setup and maintenance. "Quick disconnect" replaces typical competitive hard-wired designs.

Rubber Bumpers

Standard feature on all motorized trolleys. Provides protection from collisions. Complies with ASME standards.

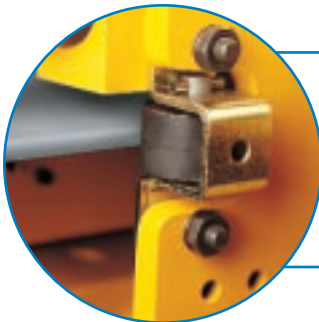


Power Supply Cord

Standard 30' length is included with cable hangers suitable for festooning.

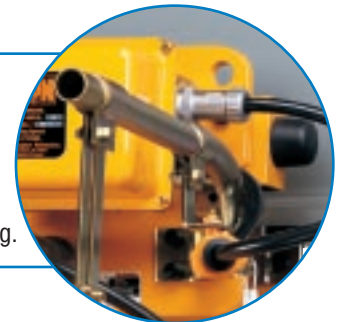
Side Guide Rollers

Four ball bearing supported rollers enhance smooth trolley motion and reduce wear of the wheels and beam.



Cable Support Arm Assembly

Convenient "tow bar" is standard component that gives support and guides the power supply festooning.



Versatile Suspension

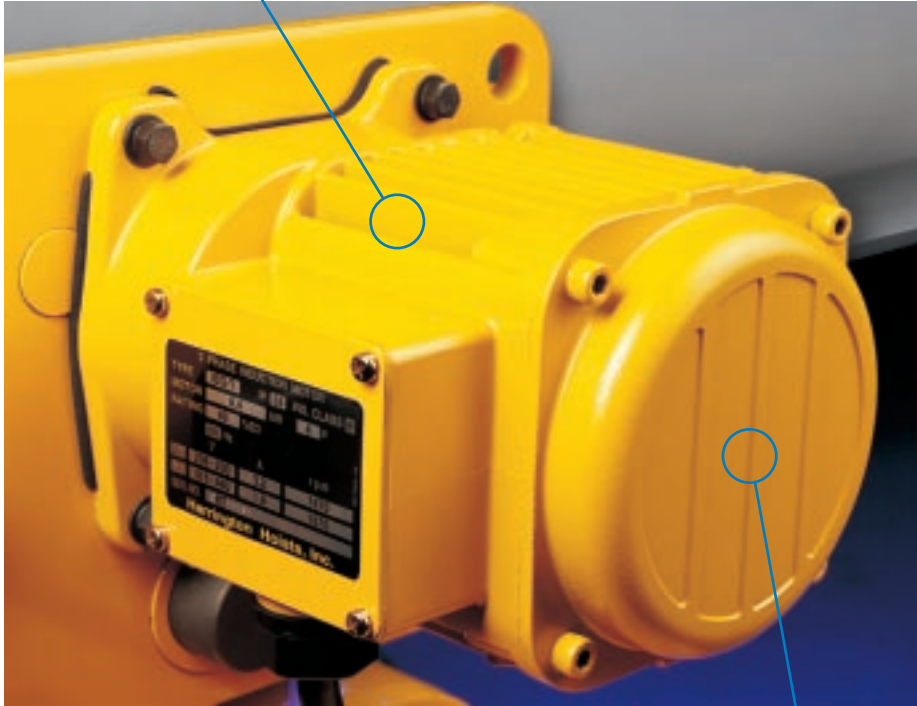
Available in parallel or perpendicular mounts. Semi-rigid lug results in ultimate low headroom and allows limited movement. Ideal for demanding applications.

Heavy Duty Motor

Designed for top performance with high-horsepower, 30-minute duty rating, cooling fins and standard thermal motor protection. Motor is totally enclosed, non-ventilated (TENV).

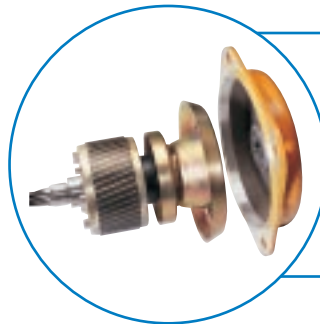
Motor Gearing

Grease lubricated, helical gears provide smooth, quiet acceleration and deceleration. Easy exchange of parts for quick speed change.



Universal Tread Wheels

Operates on both tapered and flat flanged beams. Deep groove ball bearings supply smooth, quiet travel.



Pull-Rotor Motor Brake

Extremely durable and reliable, this advanced design furnishes precision load control, deceleration and long life.

NER/ER Electric Chain Hoists With Hook and Lug Suspensions

The NER/ER Series of electric chain hoists were designed using the latest technology. The results are high quality, low-headroom, full-featured hoists that provide daily reliable performance in both routine workplace situations and severe working environments.

Refer to pages 4 and 5 for details on features and benefits.

Standard Hoist Specifications

<p>Capacity Range 1/8 Ton–5 Ton (See ER large capacity—pages 26–35)</p> <p>Reconnectable Voltage 208-230/460-3-60 for both single and dual speed hoists (optional voltages available)</p> <p>Control Voltage 110V (optional 24V and 48V)</p> <p>Duty Cycle* Single Speed—60 Min. Dual Speed—30/10 Min.</p> <p>Classification* ASME H4 ISO M5 or M4 FEM 2M or 1Am</p> <p>Ratings Hoist—IP55 Pendant—IP65</p>	<p>Limit Switch Prevents overwinding/overlifting Standard upper</p> <p>Chain Falls Single chain fall through 3 Ton (except NER030C)</p> <p>Standard Lift 10' (longer lifts available)</p> <p>Standard Pendant Drop 4' less than lift (longer drops available)</p> <p>Standard Power Supply Cord 15' (longer lengths available)</p> <p>Standard Pendants 2-button (Up/Down) Momentary contacts</p> <p>Chain Containers Optional Canvas, plastic or steel</p>
-----------------------------------------------------------------------------------------------------------------------------------------------------------------------------------------------------------------------------------------------------------------------------------------------------------------------------------------------------------------------------------------------------------------------------------------------------------------------------------------------------------	--------------------------------------------------------------------------------------------------------------------------------------------------------------------------------------------------------------------------------------------------------------------------------------------------------------------------------------------------------------------------------------------------------------------------------------------------------------------------------------------------------------------------------------------------------------

*See page 48 for additional information.

NER vs. ER Features

ER model has same high-quality features as NER plus the following:

- Second brake—Weston-style mechanical load brake
- Count hour meter
- Large capacity—8 Ton–20 Ton



NER/ER010L

NER/ER Electric Chain Hoists With Hook and Lug Suspensions

SINGLE SPEED—SPECIFICATIONS

Cap. (Tons)	Product Code	Std. Lift (ft)	Push Button Cord L (ft)	Lifting Speed (ft/min)	Lifting Motor 3 Phase 60 Hz			Load Chain Dia. (mm) x Chain Fall Lines	Net Weight (lbs)	Weight for Additional One Foot of Lift (lbs)
					Output (Hp)	Rated Current (amps)				
						@208-230V	@460V			
1/8	(N)ER001H	10	7.2	57	0.75	4.2	2.1	5.0 x 1	68	0.37
1/4	(N)ER003S			39	0.75	4.2	2.1	5.0 x 1	68	0.37
1/4	(N)ER003H			60	1.2	5.7	2.9	6.3 x 1	84	0.57
1/2	(N)ER005L			15	0.75	4.2	2.1	6.3 x 1	70	0.57
1/2	(N)ER005S			30	1.2	5.7	2.9	6.3 x 1	84	0.57
1	(N)ER010L			16	1.2	5.7	2.9	8.0 x 1	90	0.93
1	NER010M			24	1.9	7.3	3.7	8.0 x 1	110	0.93
1	(N)ER010S			29	2.4	10.5	5.3	8.0 x 1	134	0.93
1 1/2	(N)ER015S			20	2.4	10.5	5.3	10.0 x 1	152	1.5
2	(N)ER020L			14	2.4	10.5	5.3	10.0 x 1	154	1.5
2	NER020M	24	3.8	14.9	7.5	10.0 x 1	181	1.5		
2	(N)ER020S	28	4.7	18.3	9.2	10.0 x 1	240	1.5		
2 1/2	(N)ER025S	23	4.7	18.3	9.2	11.2 x 1	247	1.9		
3	NER030C	12	3.8	14.9	7.5	10.0 x 2	216	3.1		
3	(N)ER030L	16	4.7	18.3	9.2	12.5 x 1	256	2.3		
3	(N)ER030S	22	6.2	25.1	12.6	12.5 x 1	269	2.3		
5	(N)ER050L	12	4.7	18.3	9.2	11.2 x 2	306	4.0		
			8.2							

SINGLE SPEED—DIMENSIONS

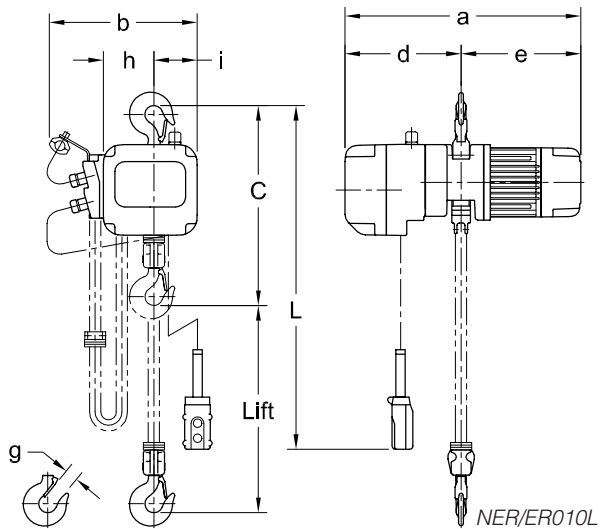
Cap. (Tons)	Product Code	Headroom C (in)	a (in)	b (in)	d (in)	e (in)	g (in)	h (in)	i (in)
1/8	(N)ER001H	13.8	21.1	13.0	10.4	10.7	0.9	4.0	3.9
1/4	(N)ER003S	13.8	21.1	13.0	10.4	10.7	0.9	4.0	3.9
1/4	(N)ER003H	14.6	21.9	13.8	10.8	11.1	0.9	4.7	4.1
1/2	(N)ER005L	14.0	21.1	13.0	10.4	10.7	0.9	4.0	3.9
1/2	(N)ER005S	14.6	21.9	13.8	10.8	11.1	0.9	4.7	4.1
1	(N)ER010L	16.1	21.9	13.8	10.8	11.1	1.2	4.7	4.1
1	NER010M	16.1	23.2	13.8	10.6	12.6	1.2	4.7	4.1
1	(N)ER010S	17.3	25.6	16.5	12.6	13.0	1.2	6.1	5.2
1 1/2	(N)ER015S	19.9	25.6	16.5	12.6	13.0	1.3	6.1	5.2
2	(N)ER020L	22.0	25.6	16.5	12.6	13.0	1.5	6.1	5.2
2	NER020M	22.0	26.9	16.5	12.4	14.4	1.5	6.1	5.2
2	(N)ER020S	24.0	30.9	18.9	15.5	15.5	1.5	7.2	6.5
2 1/2	(N)ER025S	24.6	30.9	18.9	15.5	15.5	1.6	7.2	6.5
3	NER030C	29.5	26.9	16.5	12.4	14.4	1.7	8.2	3.0
3	(N)ER030L	26.0	30.9	18.9	15.5	15.5	1.7	7.2	6.5
3	(N)ER030S	26.0	30.9	18.9	15.5	15.5	1.7	7.2	6.5
5	(N)ER050L	32.9	30.9	18.9	15.5	15.5	1.8	9.6	4.0

DUAL SPEED—SPECIFICATIONS

Cap. (Tons)	Product Code	Std. Lift (ft)	Push Button Cord L (ft)	Lifting Speed (ft/min)	Lifting Motor 3 Phase 60 Hz			Load Chain Dia. (mm) x Chain Fall Lines	Net Weight (lbs)	Weight for Additional One Foot of Lift (lbs)
					Output (Hp)	Rated Current (amps)				
						@208-230V	@460V			
1/8	(N)ER001HD	10	7.2	58/19	0.6/0.2	2.9/2.4	1.5/1.2	5.0 x 1	79	0.37
1/4	(N)ER003SD			29/10	0.6/0.2	2.9/2.4	1.5/1.2	5.0 x 1	79	0.37
1/4	(N)ER003HD			60/20	1.2/0.4	5.7/5.1	2.9/2.6	6.3 x 1	101	0.57
1/2	(N)ER005LD			14/5	0.6/0.2	2.9/2.4	1.5/1.2	6.3 x 1	84	0.57
1/2	(N)ER005SD			30/10	1.2/0.4	5.7/5.1	2.9/2.6	6.3 x 1	101	0.57
1	(N)ER010LD			14/5	1.2/0.4	5.7/5.1	2.9/2.6	8.0 x 1	108	0.93
1	(N)ER010SD			29/10	2.4/0.8	9.1/5.7	4.6/2.9	8.0 x 1	152	0.93
1 1/2	(N)ER015SD			20/7	2.4/0.8	9.1/5.7	4.6/2.9	10.0 x 1	168	1.5
2	(N)ER020LD			15/5	2.4/0.8	9.1/5.7	4.6/2.9	10.0 x 1	170	1.5
2	(N)ER020SD			29/10	4.7/1.6	19.6/9.4	9.8/4.7	10.0 x 1	287	1.5
2 1/2	(N)ER025SD	23/8	4.7/1.6	19.6/9.4	9.8/4.7	11.2 x 1	293	1.9		
3	(N)ER030LD	17/6	4.7/1.6	19.6/9.4	9.8/4.7	12.5 x 1	300	2.3		
3	(N)ER030SD	23/8	6.2/2.0	24.1/10.6	12.1/5.3	12.5 x 1	320	2.3		
5	(N)ER050LD	12/4	4.7/1.6	19.6/9.4	9.8/4.7	11.2 x 2	353	4.0		

DUAL SPEED—DIMENSIONS

Cap. (Tons)	Product Code	Headroom C (in)	a (in)	b (in)	d (in)	e (in)	g (in)	h (in)	i (in)
1/8	(N)ER001HD	13.8	22.2	13.0	10.4	11.9	0.9	4.0	3.9
1/4	(N)ER003SD	13.8	22.2	13.0	10.4	11.9	0.9	4.0	3.9
1/4	(N)ER003HD	14.6	23.2	13.8	10.6	12.6	0.9	4.7	4.1
1/2	(N)ER005LD	14.0	22.2	13.0	10.4	11.9	0.9	4.0	3.9
1/2	(N)ER005SD	14.6	23.2	13.8	10.6	12.6	0.9	4.7	4.1
1	(N)ER010LD	16.1	23.2	13.8	10.6	12.6	1.2	4.7	4.1
1	(N)ER010SD	17.3	26.9	16.5	12.4	14.4	1.2	6.1	5.2
1 1/2	(N)ER015SD	19.9	26.9	16.5	12.4	14.4	1.3	6.1	5.2
2	(N)ER020LD	22.6	26.9	16.5	12.4	14.4	1.5	6.1	5.2
2	(N)ER020SD	27.0	32.2	18.9	15.5	16.8	1.5	7.2	6.5
2 1/2	(N)ER025SD	27.0	32.2	18.9	15.5	16.8	1.6	7.2	6.5
3	(N)ER030LD	28.5	32.2	18.9	15.5	16.8	1.7	7.2	6.5
3	(N)ER030SD	28.5	32.2	18.9	15.5	16.8	1.7	7.2	6.5
5	(N)ER050LD	35.2	32.2	18.9	15.5	16.8	1.8	9.6	4.0



NERM/ERM Electric Chain Hoists With Motorized Trolleys

To further expand the capabilities of our NER/ER line of electric hoists, the MR Series of electric trolleys was developed. They feature an innovative side guide roller system that results in very smooth travel along the beam. Harrington's MR trolley provides the mobility needed in a wide variety of industrial applications.

Refer to pages 4, 5, 6 and 7 for features and benefits and page 8 for standard hoist specifications.

Standard Motorized Trolley Specifications

Capacity Range

1/8 Ton—5 Ton
(See ER large capacity—pages 26–35)

Reconnectable Voltage

208-230/460-3-60 for
both single and dual speed trolleys
(optional voltages available)

Control Voltage

110V (optional 24V and 48V)

Duty Cycle*

Single Speed—30 Min.
Dual Speed—30/10 Min.

Classification*

ASME H4
ISO M5 or M4
FEM 2M or 1Am

Ratings

Trolley—IP55
Pendant—IP65

Standard Power Supply Cord

30' (longer lengths available)

Standard Pendants

4-button (Up/Dn/For/Rev)
Momentary contacts

Shafts

Standard shafts fit wide flange range
Longer shafts for wider beams
Spacers for easy adjustments



**See page 48 for additional information.*



*NERM/ERM030L-L
(Shown with
optional canvas
chain container.)*

NERM/ERM Electric Chain Hoists With Motorized Trolleys

SINGLE SPEED HOIST WITH SINGLE SPEED TROLLEY—SPECIFICATIONS

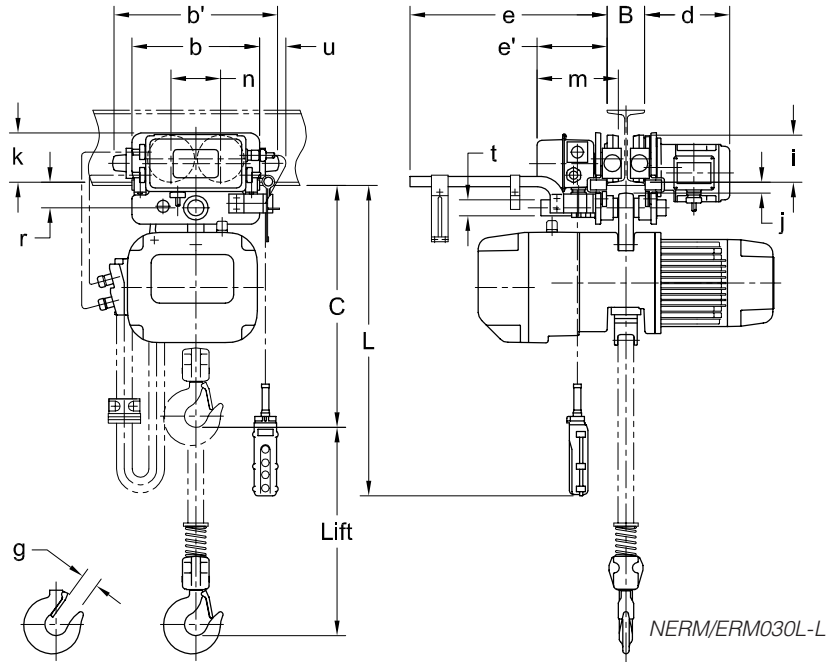
Cap. (Tons)	Product Code	Std. Lift (ft)	Push Button Cord L (ft)	Lifting Speed (ft/min)	Traversing Speed (ft/min)	Lifting Motor 3 Phase 60 Hz			Traversing Motor 3 Phase 60 Hz			Flange Width Adjustability B (in)		Min. Allow. Radius for Curve (in)	Load Chain Dia. (mm) x Chain Fall Lines	Net Weight (lbs)	Weight for Additional One Foot of Lift (lbs)
						Output (Hp)	Rated Current (amps)		Output (Hp)	Rated Current (amps)		Standard	Optional				
							@208-230V	@460V		@208-230V	@460V						
1/8	(N)ERM001H-L/S	10	7.5	57	L=40 S=80	0.75	4.2	2.1	0.5	3.2	1.6	2.28 to 5.00	5.01 to 6.02 OR 6.03 to 12.00	31.5	5.0 x 1	137	0.37
1/4	(N)ERM003S-L/S			39		0.75	4.2	2.1	0.5	3.2	1.6				5.0 x 1	137	0.37
1/4	(N)ERM003H-L/S			60		1.2	5.7	2.9	0.5	3.2	1.6				6.3 x 1	152	0.57
1/2	(N)ERM005L-L/S			15		0.75	4.2	2.1	0.5	3.2	1.6				6.3 x 1	139	0.57
1/2	(N)ERM005S-L/S			30		1.2	5.7	2.9	0.5	3.2	1.6				6.3 x 1	152	0.57
1	(N)ERM010L-L/S			16		1.2	5.7	2.9	0.5	3.2	1.6				8.0 x 1	159	0.93
1	NERM010M-L/S			24		1.9	7.3	3.7	0.5	3.2	1.6				8.0 x 1	179	0.93
1	(N)ERM010S-L/S			29		2.4	10.5	5.3	0.5	3.2	1.6				8.0 x 1	203	0.93
1 1/2	(N)ERM015S-L/S			20		2.4	10.5	5.3	0.5	3.2	1.6				10.0 x 1	238	1.5
2	(N)ERM020L-L/S			14		2.4	10.5	5.3	0.5	3.2	1.6				10.0 x 1	240	1.5
2	NERM020M-L/S	24	3.8	14.9	7.5	0.5	3.2	1.6	10.0 x 1	267	1.5						
2	(N)ERM020S-L/S	28	4.7	18.3	9.2	0.5	3.2	1.6	10.0 x 1	326	1.5						
2 1/2	(N)ERM025S-L/S	23	4.7	18.3	9.2	0.5	3.2	1.6	3.23 to 6.02	6.03 to 7.02 OR 7.03 to 12.00	39.4	11.2 x 1	353	1.9			
3	NERM030C-L/S	12	3.8	14.9	7.5	0.5	3.2	1.6				10.0 x 2	317	3.1			
3	(N)ERM030L-L/S	16	4.7	18.3	9.2	0.5	3.2	1.6				12.5 x 1	362	2.3			
3	(N)ERM030S-L/S	22	6.2	25.1	12.6	0.5	3.2	1.6	12.5 x 1	375	2.3						
5	(N)ERM050L-L/S	12	4.7	18.3	9.2	1.0	5.1	2.5	3.94 to 7.01	7.02 to 7.60 OR 7.61 to 12.00	70.9	11.2 x 2	461	4.0			

SINGLE SPEED HOIST WITH SINGLE SPEED TROLLEY—DIMENSIONS

Cap. (Tons)	Product Code	Headroom C (in)	b (in)	b' (in)	d (in)	e (in)	e' (in)	g (in)	i (in)	j (in)	k (in)	m (in)	n (in)	r (in)	t (in)	u (in)
1/8	(N)ERM001H-L/S	14.6	12.4	15.6	8.7	20.3	7.0	0.9	3.74	0.9	5.1	8.0	4.3	2.0	1.22	3.2
1/4	(N)ERM003S-L/S	14.6	12.4	15.6	8.7	20.3	7.0	0.9	3.74	0.9	5.1	8.0	4.3	2.0	1.22	3.2
1/4	(N)ERM003H-L/S	15.4	12.4	15.6	8.7	20.3	7.0	0.9	3.74	0.9	5.1	8.0	4.3	2.0	1.22	3.2
1/2	(N)ERM005L-L/S	14.6	12.4	15.6	8.7	20.3	7.0	0.9	3.74	0.9	5.1	8.0	4.3	2.0	1.22	3.2
1/2	(N)ERM005S-L/S	15.4	12.4	15.6	8.7	20.3	7.0	0.9	3.74	0.9	5.1	8.0	4.3	2.0	1.22	3.2
1	(N)ERM010L-L/S	16.5	12.4	15.6	8.7	20.3	7.0	1.2	3.74	0.9	5.1	8.0	4.3	2.0	1.22	3.2
1	NERM010M-L/S	16.5	12.4	15.6	8.7	20.3	7.0	1.2	3.74	0.9	5.1	8.0	4.3	2.0	1.22	3.2
1	(N)ERM010S-L/S	17.7	12.4	15.6	8.7	20.3	7.0	1.2	3.74	0.9	5.1	8.0	4.3	2.0	1.22	3.2
1 1/2	(N)ERM015S-L/S	19.5	12.8	16.4	8.9	20.5	7.2	1.3	4.33	1.1	4.9	8.3	4.6	2.4	1.42	3.0
2	(N)ERM020L-L/S	21.7	12.8	16.4	8.9	20.5	7.2	1.5	4.33	1.1	4.9	8.3	4.6	2.4	1.42	3.0
2	NERM020M-L/S	21.7	12.8	16.4	8.9	20.5	7.2	1.5	4.33	1.1	4.9	8.3	4.6	2.4	1.42	3.0
2	(N)ERM020S-L/S	23.6	12.8	16.4	8.9	20.5	7.2	1.5	4.33	1.1	4.9	8.3	4.6	2.4	1.42	3.0
2 1/2	(N)ERM025S-L/S	24.2	13.4	17.4	8.9	20.5	7.3	1.6	4.92	1.1	5.2	8.5	5.2	2.7	1.69	2.7
3	NERM030C-L/S	28.9	13.4	17.4	8.9	20.5	7.3	1.7	4.92	1.1	5.2	8.5	5.2	2.7	1.69	2.7
3	(N)ERM030L-L/S	25.4	13.4	17.4	8.9	20.5	7.3	1.7	4.92	1.1	5.2	8.5	5.2	2.7	1.69	2.7
3	(N)ERM030S-L/S	25.4	13.4	17.4	8.9	20.5	7.3	1.7	4.92	1.1	5.2	8.5	5.2	2.7	1.69	2.7
5	(N)ERM050L-L/S	32.7	15.7	19.8	11.1	20.8	7.6	1.8	5.51	1.7	5.7	9.2	5.9	3.4	2.13	1.5

DUAL SPEED HOIST WITH SINGLE SPEED TROLLEY—SPECIFICATIONS

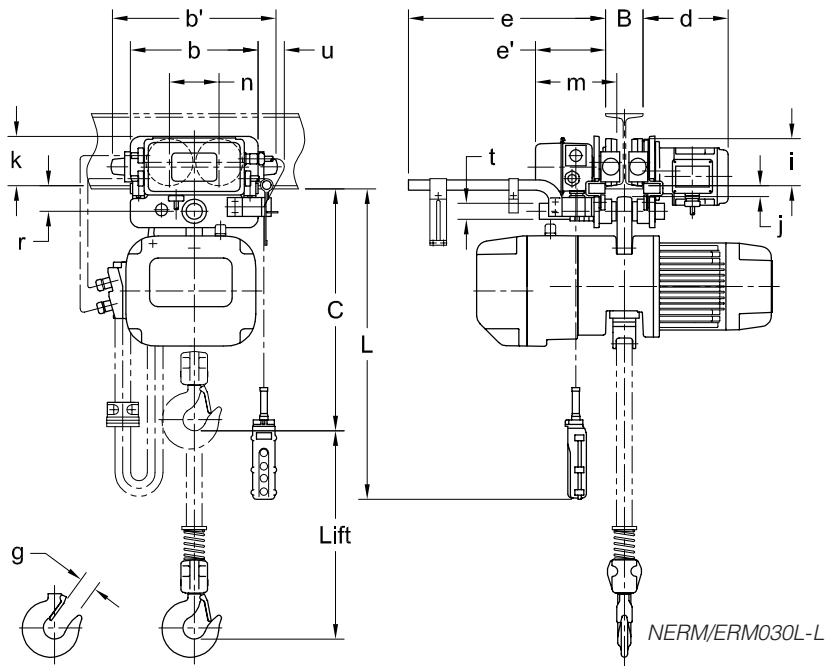
Cap. (Tons)	Product Code	Std. Lift (ft)	Push Button Cord L (ft)	Lifting Speed (ft/min)	Traversing Speed (ft/min)	Lifting Motor 3 Phase 60 Hz			Traversing Motor 3 Phase 60 Hz			Flange Width Adjustability B (in)		Min. Allow. Radius for Curve (in)	Load Chain Dia. (mm) x Chain Fall Lines	Net Weight (lbs)	Weight for Additional One Foot of Lift (lbs)
						Output (Hp)	Rated Current (amps)		Output (Hp)	Rated Current (amps)		Standard	Optional				
							@208-230V	@ 460V		@208-230V	@ 460V						
1/8	(N)ERM001HD-L/S	10	7.5	58/19	L=40 S=80	0.6/0.2	2.9/2.4	1.5/1.2	0.5	3.2	1.6	2.28 to 5.00	5.01 to 6.02 OR 6.03 to 12.00	5.0 x 1	148	0.37	
1/4	(N)ERM003SD-L/S			29/10		0.6/0.2	2.9/2.4	1.5/1.2	0.5	3.2	1.6			5.0 x 1	148	0.37	
1/4	(N)ERM003HD-L/S			60/20		1.2/0.4	5.7/5.1	2.9/2.6	0.5	3.2	1.6			6.3 x 1	170	0.57	
1/2	(N)ERM005LD-L/S			14/5		0.6/0.2	2.9/2.4	1.5/1.2	0.5	3.2	1.6			6.3 x 1	152	0.57	
1/2	(N)ERM005SD-L/S			30/10		1.2/0.4	5.7/5.1	2.9/2.6	0.5	3.2	1.6			6.3 x 1	170	0.57	
1	(N)ERM010LD-L/S			14/5		1.2/0.4	5.7/5.1	2.9/2.6	0.5	3.2	1.6			8.0 x 1	176	0.93	
1	(N)ERM010SD-L/S			29/10		2.4/0.8	9.1/5.7	4.6/2.9	0.5	3.2	1.6			8.0 x 1	220	0.93	
1 1/2	(N)ERM015SD-L/S			20/7		2.4/0.8	9.1/5.7	4.6/2.9	0.5	3.2	1.6	10.0 x 1	254	1.5			
2	(N)ERM020LD-L/S			15/5		2.4/0.8	9.1/5.7	4.6/2.9	0.5	3.2	1.6	10.0 x 1	256	1.5			
2	(N)ERM020SD-L/S			29/10		4.7/1.6	19.6/9.4	9.8/4.7	0.5	3.2	1.6	10.0 x 1	373	1.5			
2 1/2	(N)ERM025SD-L/S			23/8		4.7/1.6	19.6/9.4	9.8/4.7	0.5	3.2	1.6	11.2 x 1	399	1.9			
3	(N)ERM030LD-L/S			17/6		4.7/1.6	19.6/9.4	9.8/4.7	0.5	3.2	1.6	12.5 x 1	406	2.3			
3	(N)ERM030SD-L/S			23/8		6.2/2.0	24.1/10.6	12.1/5.3	0.5	3.2	1.6	12.5 x 1	425	2.3			
5	(N)ERM050LD-L/S			12/4		4.7/1.6	19.6/9.4	9.8/4.7	1.0	5.1	2.5	3.94 to 7.01	7.02 to 7.60 OR 7.61 to 12.00	70.9	11.2 x 2	507	4.0



NERM/ERM Electric Chain Hoists With Motorized Trolleys

DUAL SPEED HOIST WITH SINGLE SPEED TROLLEY—DIMENSIONS

Cap. (Tons)	Product Code	Headroom C (in)	b (in)	b' (in)	d (in)	e (in)	e' (in)	g (in)	i (in)	j (in)	k (in)	m (in)	n (in)	r (in)	t (in)	u (in)
1/8	(N)ERM001HD-L/S	14.6	12.4	15.6	8.7	20.3	7.0	0.9	3.74	0.9	5.1	8.0	4.3	2.0	1.22	3.2
1/4	(N)ERM003SD-L/S	14.6	12.4	15.6	8.7	20.3	7.0	0.9	3.74	0.9	5.1	8.0	4.3	2.0	1.22	3.2
1/4	(N)ERM003HD-L/S	15.4	12.4	15.6	8.7	20.3	7.0	0.9	3.74	0.9	5.1	8.0	4.3	2.0	1.22	3.2
1/2	(N)ERM005LD-L/S	14.6	12.4	15.6	8.7	20.3	7.0	0.9	3.74	0.9	5.1	8.0	4.3	2.0	1.22	3.2
1/2	(N)ERM005SD-L/S	15.4	12.4	15.6	8.7	20.3	7.0	0.9	3.74	0.9	5.1	8.0	4.3	2.0	1.22	3.2
1	(N)ERM010LD-L/S	16.5	12.4	15.6	8.7	20.3	7.0	1.2	3.74	0.9	5.1	8.0	4.3	2.0	1.22	3.2
1	(N)ERM010SD-L/S	17.7	12.4	15.6	8.7	20.3	7.0	1.2	3.74	0.9	5.1	8.0	4.3	2.0	1.22	3.2
1 1/2	(N)ERM015SD-L/S	19.5	12.8	16.4	8.9	20.5	7.2	1.3	4.33	1.1	4.9	8.3	4.6	2.4	1.42	3.0
2	(N)ERM020LD-L/S	22.2	12.8	16.4	8.9	20.5	7.2	1.5	4.33	1.1	4.9	8.3	4.6	2.4	1.42	3.0
2	(N)ERM020SD-L/S	26.6	12.8	16.4	8.9	20.5	7.2	1.5	4.33	1.1	4.9	8.3	4.6	2.4	1.42	3.0
2 1/2	(N)ERM025SD-L/S	26.6	13.4	17.4	8.9	20.5	7.3	1.6	4.92	1.1	5.2	8.5	5.2	2.7	1.69	2.7
3	(N)ERM030LD-L/S	28.0	13.4	17.4	8.9	20.5	7.3	1.7	4.92	1.1	5.2	8.5	5.2	2.7	1.69	2.7
3	(N)ERM030SD-L/S	28.0	13.4	17.4	8.9	20.5	7.3	1.7	4.92	1.1	5.2	8.5	5.2	2.7	1.69	2.7
5	(N)ERM050LD-L/S	35.0	15.7	19.8	11.1	20.8	7.6	1.8	5.51	1.7	5.7	9.2	5.9	3.4	2.13	1.5



DUAL SPEED HOIST WITH DUAL SPEED TROLLEY—SPECIFICATIONS

Cap. (Tons)	Product Code	Std. Lift (ft)	Push Button Cord L (ft)	Lifting Speed (ft/min)	Traversing Speed (ft/min)	Lifting Motor 3 Phase 60 Hz			Traversing Motor 3 Phase 60 Hz			Flange Width Adjustability B (in)		Min. Allow. Radius for Curve (in)	Load Chain Dia. (mm) x Chain Fall Lines	Net Weight (lbs)	Weight for Additional One Foot of Lift (lbs)
						Output (Hp)	Rated Current (amps)		Output (Hp)	Rated Current (amps)		Standard	Optional				
							@208-230V	@460V		@208-230V	@460V						
1/8	(N)ERM001HD-SD	10	7.5	58/19	80/20	0.6/0.2	2.9/2.4	1.5/1.2	0.4/0.1	2.9/2.2	1.5/1.1	2.28 to 5.00	5.01 to 6.02 OR 6.03 to 12.00	5.0 x 1	157	0.37	
1/4	(N)ERM003SD-SD			29/10		0.6/0.2	2.9/2.4	1.5/1.2	0.4/0.1	2.9/2.2	1.5/1.1			5.0 x 1	157	0.37	
1/4	(N)ERM003HD-SD			60/20		1.2/0.4	5.7/5.1	2.9/2.6	0.4/0.1	2.9/2.2	1.5/1.1			6.3 x 1	179	0.57	
1/2	(N)ERM005LD-SD			14/5		0.6/0.2	2.9/2.4	1.5/1.2	0.4/0.1	2.9/2.2	1.5/1.1			6.3 x 1	161	0.57	
1/2	(N)ERM005SD-SD			30/10		1.2/0.4	5.7/5.1	2.9/2.6	0.4/0.1	2.9/2.2	1.5/1.1			6.3 x 1	179	0.57	
1	(N)ERM010LD-SD			14/5		1.2/0.4	5.7/5.1	2.9/2.6	0.4/0.1	2.9/2.2	1.5/1.1			8.0 x 1	185	0.93	
1	(N)ERM010SD-SD			29/10		2.4/0.8	9.1/5.7	4.6/2.9	0.4/0.1	2.9/2.2	1.5/1.1	8.0 x 1	229	0.93			
1 1/2	(N)ERM015SD-SD			20/7		2.4/0.8	9.1/5.7	4.6/2.9	0.4/0.1	2.9/2.2	1.5/1.1	10.0 x 1	262	1.5			
2	(N)ERM020LD-SD			15/5		2.4/0.8	9.1/5.7	4.6/2.9	0.4/0.1	2.9/2.2	1.5/1.1	10.0 x 1	264	1.5			
2	(N)ERM020SD-SD			29/10		4.7/1.6	19.6/9.4	9.8/4.7	0.4/0.1	2.9/2.2	1.5/1.1	10.0 x 1	381	1.5			
2 1/2	(N)ERM025SD-SD			23/8		4.7/1.6	19.6/9.4	9.8/4.7	0.9/0.2	3.6/3.1	1.8/1.6	11.2 x 1	406	1.9			
3	(N)ERM030LD-SD			17/6		4.7/1.6	19.6/9.4	9.8/4.7	0.9/0.2	3.6/3.1	1.8/1.6	12.5 x 1	412	2.3			
3	(N)ERM030SD-SD			23/8		6.2/2.0	24.1/10.6	12.1/5.3	0.9/0.2	3.6/3.1	1.8/1.6	12.5 x 1	432	2.3			
5	(N)ERM050LD-SD			12/4		4.7/1.6	19.6/9.4	9.8/4.7	0.9/0.2	3.6/3.1	1.8/1.6	3.94 to 7.01	7.02 to 7.60 OR 7.61 to 12.00	70.9	11.2 x 2	516	4.0

DUAL SPEED HOIST WITH DUAL SPEED TROLLEY—DIMENSIONS

Cap. (Tons)	Product Code	Headroom C (in)	b (in)	b' (in)	d (in)	e (in)	e' (in)	g (in)	i (in)	j (in)	k (in)	m (in)	n (in)	r (in)	t (in)	u (in)
1/8	(N)ERM001HD-SD	14.6	12.4	15.6	10.6	20.3	7.0	0.9	3.74	0.9	5.1	8.0	4.3	2.0	1.22	3.2
1/4	(N)ERM003SD-SD	14.6	12.4	15.6	10.6	20.3	7.0	0.9	3.74	0.9	5.1	8.0	4.3	2.0	1.22	3.2
1/4	(N)ERM003HD-SD	15.4	12.4	15.6	10.6	20.3	7.0	0.9	3.74	0.9	5.1	8.0	4.3	2.0	1.22	3.2
1/2	(N)ERM005LD-SD	14.6	12.4	15.6	10.6	20.3	7.0	0.9	3.74	0.9	5.1	8.0	4.3	2.0	1.22	3.2
1/2	(N)ERM005SD-SD	15.4	12.4	15.6	10.6	20.3	7.0	0.9	3.74	0.9	5.1	8.0	4.3	2.0	1.22	3.2
1	(N)ERM010LD-SD	16.5	12.4	15.6	10.6	20.3	7.0	1.2	3.74	0.9	5.1	8.0	4.3	2.0	1.22	3.2
1	(N)ERM010SD-SD	17.7	12.4	15.6	10.6	20.3	7.0	1.2	3.74	0.9	5.1	8.0	4.3	2.0	1.22	3.2
1 1/2	(N)ERM015SD-SD	19.5	12.8	16.4	10.7	20.5	7.2	1.3	4.33	1.1	4.9	8.3	4.6	2.4	1.42	3.0
2	(N)ERM020LD-SD	22.2	12.8	16.4	10.7	20.5	7.2	1.5	4.33	1.1	4.9	8.3	4.6	2.4	1.42	3.0
2	(N)ERM020SD-SD	26.6	12.8	16.4	10.7	20.5	7.2	1.5	4.33	1.1	4.9	8.3	4.6	2.4	1.42	3.0
2 1/2	(N)ERM025SD-SD	26.6	13.4	17.4	10.8	20.5	7.3	1.6	4.92	1.1	5.2	8.5	5.2	2.7	1.69	2.7
3	(N)ERM030LD-SD	28.0	13.4	17.4	10.8	20.5	7.3	1.7	4.92	1.1	5.2	8.5	5.2	2.7	1.69	2.7
3	(N)ERM030SD-SD	28.0	13.4	17.4	10.8	20.5	7.3	1.7	4.92	1.1	5.2	8.5	5.2	2.7	1.69	2.7
5	(N)ERM050LD-SD	35.0	15.7	19.8	11.1	20.8	7.6	1.8	5.51	1.7	5.7	9.2	5.9	3.4	2.13	1.5

NERP/ERP and NERG/ERG Electric Chain Hoists With Push and Geared Trolleys

Additional options are available based on the application and trolley travel requirements. Mounting our NER/ER Series hoists to either a push or geared trolley will create an easy and economical method of transporting the load. This combination is ideal for small workshops and infrequent moves.

Refer to page 4 and 5 for features and benefits and page 8 for standard hoist specifications.

Standard Manual Trolley Specifications

Capacity Range

1/8 Ton–5 Ton

(See ER large capacity—pages 26–35)

Shafts

Standard shafts fit wide flange range

Longer shafts for wider beams

Spacers for easy adjustments

Drop Stops

Standard

Bumpers

Optional

Standard Hand Chain Drop

On geared trolleys

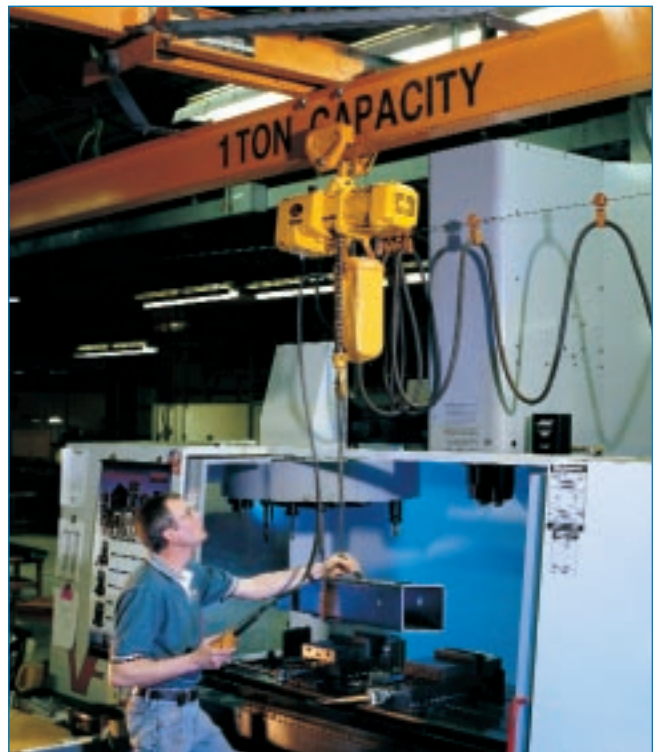
2' less than lift (longer drops available)

Wheels

All steel

Shielded ball bearings

Fit flat or tapered beam flange





*NERP/ERP005L
(Shown with optional
steel chain container
available for
very long lifts.)*



NERG/ERG050L

NERP/ERP and NERG/ERG Electric Chain Hoists With Push and Geared Trolleys

SINGLE SPEED HOIST WITH PUSH OR GEARED TROLLEY—SPECIFICATIONS

Cap. (Tons)	Product Code	Std. Lift (ft)	Push Button Cord L (ft)	Lifting Speed (ft/min)	Lifting Motor 3 Phase 60 Hz			Flange Width Adjustability B (in)		Min.* Allow. Radius for Curve (in)	Load Chain Dia. (mm) x Chain Fall Lines	Net Weight (lbs)	Weight for Additional One Foot of Lift (lbs)
					Output (Hp)	Rated Current (amps)		Standard	Optional				
						@208-230V	@460V						
1/8	(N)ERP(ERG)001H	10	7.5	57	0.75	4.2	2.1	2.28 to 4.00 (2.28 to 5.00)	4.01 to 8.00 (5.01 to 8.00) OR 8.01 to 12.00	43.3 (51.2)	5.0 x 1	79 (97)	0.37 (1.0)
1/4	(N)ERP(ERG)003S			39	0.75	4.2	2.1				5.0 x 1	79 (97)	0.37 (1.0)
1/4	(N)ERP(ERG)003H			60	1.2	5.7	2.9				6.3 x 1	95 (115)	0.57 (1.2)
1/2	(N)ERP(ERG)005L			15	0.75	4.2	2.1				6.3 x 1	82 (99)	0.57 (1.2)
1/2	(N)ERP(ERG)005S			30	1.2	5.7	2.9				6.3 x 1	95 (115)	0.57 (1.2)
1	(N)ERP(ERG)010L			16	1.2	5.7	2.9				2.28 to 5.00	5.01 to 8.00 OR 8.01 to 12.00	51.2
1	NERP(NERG)010M			24	1.9	7.3	3.7	8.0 x 1	131 (141)	0.93 (1.5)			
1	(N)ERP(ERG)010S			29	2.4	10.5	5.3	8.0 x 1	154 (165)	0.93 (1.5)			
1 1/2	(N)ERP(ERG)015S			20	2.4	10.5	5.3	3.23 to 6.02	6.03 to 12.00	59.1	10.0 x 1	187 (198)	1.5 (2.2)
2	(N)ERP(ERG)020L			14	2.4	10.5	5.3				10.0 x 1	190 (201)	1.5 (2.2)
2	NERP(NERG)020M			24	3.8	14.9	7.5				10.0 x 1	216 (227)	1.5 (2.2)
2	(N)ERP(ERG)020S			28	4.7	18.3	9.2				10.0 x 1	276 (287)	1.5 (2.2)
2 1/2	(N)ERP(ERG)025S			23	4.7	18.3	9.2				11.2 x 1	300 (311)	1.9 (2.6)
3	NERP(NERG)030C			12	3.8	14.9	7.5				66.9	10.0 x 2	260 (282)
3	(N)ERP(ERG)030L	16	4.7	18.3	9.2	12.5 x 1	311 (322)	2.3 (2.9)					
3	(N)ERP(ERG)030S	22	6.2	25.1	12.6	12.5 x 1	324 (335)	2.3 (2.9)					
5	(N)ERP(ERG)050L	12	4.7	18.3	9.2	3.94 to 7.02	7.03 to 12.00	90.6	11.2 x 2	417 (432)		4.0 (4.6)	

Figures in parentheses are data for geared trolley.

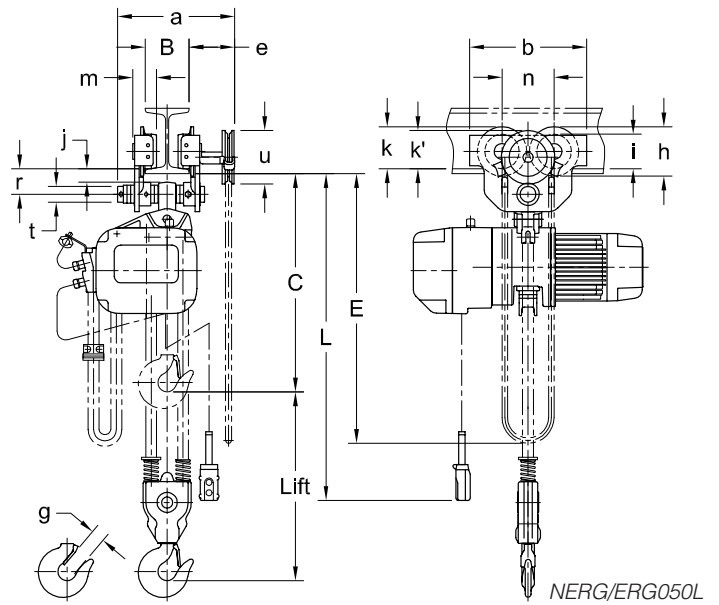
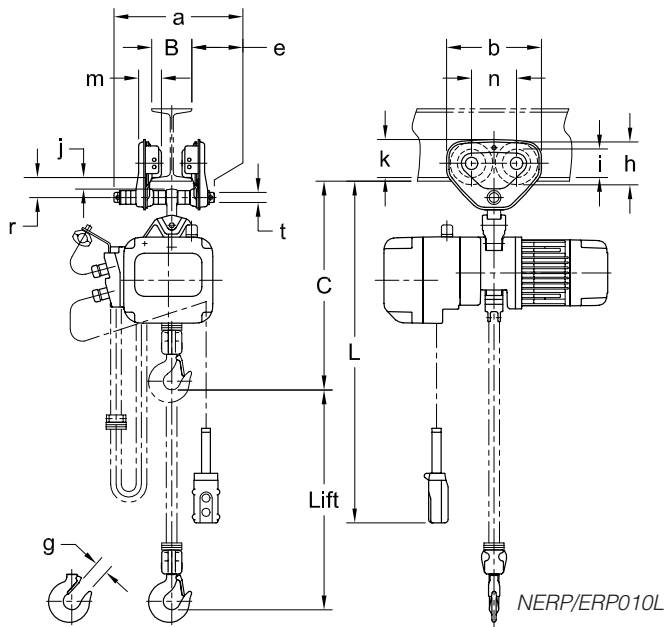
*Minimum flange width for curved beam: 1 Ton Push and 1/8 to 1 Ton Geared = 2.87 in.; 3 Ton Push and Geared = 3.50 in.

SINGLE SPEED HOIST WITH PUSH TROLLEY—DIMENSIONS

Cap. (Tons)	Product Code	Headroom C (in)	a (in)	b (in)	e (in)	g (in)	h (in)	i (in)	j (in)	k (in)	m (in)	n (in)	r (in)	t (in)
1/8	(N)ERP001H	15.4	8.0	7.2	1.8	0.9	3.2	2.36	0.7	3.0	1.9	3.3	1.5	0.87
1/4	(N)ERP003S	15.4	8.0	7.2	1.8	0.9	3.2	2.36	0.7	3.0	1.9	3.3	1.5	0.87
1/4	(N)ERP003H	16.1	8.0	7.2	1.8	0.9	3.2	2.36	0.7	3.0	1.9	3.3	1.5	0.87
1/2	(N)ERP005L	15.4	8.0	7.2	1.8	0.9	3.2	2.36	0.7	3.0	1.9	3.3	1.5	0.87
1/2	(N)ERP005S	16.1	8.0	7.2	1.8	0.9	3.2	2.36	0.7	3.0	1.9	3.3	1.5	0.87
1	(N)ERP010L	18.1	9.8	9.3	2.2	1.2	4.2	2.80	1.1	3.7	2.2	4.4	2.0	0.98
1	NERP010M	18.1	9.8	9.3	2.2	1.2	4.2	2.80	1.1	3.7	2.2	4.4	2.0	0.98
1	(N)ERP010S	19.5	9.8	9.3	2.2	1.2	4.2	2.80	1.1	3.7	2.2	4.4	2.0	0.98
1 1/2	(N)ERP015S	21.9	11.8	11.0	2.7	1.3	5.0	3.35	1.3	4.4	2.8	5.2	2.4	1.26
2	(N)ERP020L	24.0	11.8	11.0	2.7	1.5	5.0	3.35	1.3	4.4	2.8	5.2	2.4	1.26
2	NERP020M	24.0	11.8	11.0	2.7	1.5	5.0	3.35	1.3	4.4	2.8	5.2	2.4	1.26
2	(N)ERP020S	26.0	11.8	11.0	2.7	1.5	5.0	3.35	1.3	4.4	2.8	5.2	2.4	1.26
2 1/2	(N)ERP025S	26.6	12.6	12.8	3.1	1.6	5.8	3.94	1.4	5.3	3.1	6.0	2.7	1.42
3	NERP030C	29.3	12.6	12.8	3.1	1.7	5.8	3.94	1.4	5.3	3.1	6.0	2.7	1.42
3	(N)ERP030L	27.8	12.6	12.8	3.1	1.7	5.8	3.94	1.4	5.3	3.1	6.0	2.7	1.42
3	(N)ERP030S	27.8	12.6	12.8	3.1	1.7	5.8	3.94	1.4	5.3	3.1	6.0	2.7	1.42
5	(N)ERP050L	32.5	11.7	15.7	2.1	1.8	6.7	4.65	1.8	5.7	3.2	7.0	3.5	2.13

SINGLE SPEED HOIST WITH GEARED TROLLEY—DIMENSIONS

Cap. (Tons)	Product Code	Headroom C (in)	E (ft)	a (in)	b (in)	e (in)	g (in)	h (in)	i (in)	j (in)	k (in)	k' (in)	m (in)	n (in)	r (in)	t (in)	u (in)
1/8	(N)ERG001H	16.1	10.5	13.6	9.3	6.0	0.9	4.2	2.80	1.1	3.7	4.2	2.2	4.4	2.0	0.98	7.2
1/4	(N)ERG003S	16.1	10.5	13.6	9.3	6.0	0.9	4.2	2.80	1.1	3.7	4.2	2.2	4.4	2.0	0.98	7.2
1/4	(N)ERG003H	16.9	10.5	13.6	9.3	6.0	0.9	4.2	2.80	1.1	3.7	4.2	2.2	4.4	2.0	0.98	7.2
1/2	(N)ERG005L	16.1	10.5	13.6	9.3	6.0	0.9	4.2	2.80	1.1	3.7	4.2	2.2	4.4	2.0	0.98	7.2
1/2	(N)ERG005S	16.9	10.5	13.6	9.3	6.0	0.9	4.2	2.80	1.1	3.7	4.2	2.2	4.4	2.0	0.98	7.2
1	(N)ERG010L	18.1	10.5	13.6	9.3	6.0	1.2	4.2	2.80	1.1	3.7	4.2	2.2	4.4	2.0	0.98	7.2
1	NERG010M	18.1	10.5	13.6	9.3	6.0	1.2	4.2	2.80	1.1	3.7	4.2	2.2	4.4	2.0	0.98	7.2
1	(N)ERG010S	19.5	10.5	13.6	9.3	6.0	1.2	4.2	2.80	1.1	3.7	4.2	2.2	4.4	2.0	0.98	7.2
1 1/2	(N)ERG015S	21.9	10.5	15.2	11.0	6.1	1.3	5.0	3.35	1.3	4.4	4.3	2.8	5.2	2.4	1.26	7.2
2	(N)ERG020L	24.0	10.5	15.2	11.0	6.1	1.5	5.0	3.35	1.3	4.4	4.3	2.8	5.2	2.4	1.26	7.2
2	NERG020M	24.0	10.5	15.2	11.0	6.1	1.5	5.0	3.35	1.3	4.4	4.3	2.8	5.2	2.4	1.26	7.2
2	(N)ERG020S	26.0	10.5	15.2	11.0	6.1	1.5	5.0	3.35	1.3	4.4	4.3	2.8	5.2	2.4	1.26	7.2
2 1/2	(N)ERG025S	26.6	11.0	15.7	12.8	6.2	1.6	5.8	3.94	1.4	5.3	4.5	3.1	6.0	2.7	1.42	7.2
3	NERG030C	29.3	11.0	15.7	12.8	6.2	1.7	5.8	3.94	1.4	5.3	4.5	3.1	6.0	2.7	1.42	7.2
3	(N)ERG030L	27.8	11.0	15.7	12.8	6.2	1.7	5.8	3.94	1.4	5.3	4.5	3.1	6.0	2.7	1.42	7.2
3	(N)ERG030S	27.8	11.0	15.7	12.8	6.2	1.7	5.8	3.94	1.4	5.3	4.5	3.1	6.0	2.7	1.42	7.2
5	(N)ERG050L	32.5	11.4	15.8	15.7	6.1	1.8	6.7	4.65	1.8	5.7	5.2	3.2	7.0	3.5	2.13	7.2



NERP/ERP and NERG/ERG Electric Chain Hoists With Push and Geared Trolleys

DUAL SPEED HOIST WITH PUSH OR GEARED TROLLEY—SPECIFICATIONS

Cap. (Tons)	Product Code	Std. Lift (ft)	Push Button Cord L (ft)	Lifting Speed (ft/min)	Lifting Motor 3 Phase 60 Hz			Flange Width Adjustability B (in)		Min.* Allow. Radius for Curve (in)	Load Chain Dia. (mm) x Chain Fall Lines	Net Weight (lbs)	Weight for Additional One Foot of Lift (lbs)
					Output (Hp)	Rated Current (amps)		Standard	Optional				
						@208-230V	@460V						
1/8	(N)ERP(ERG)001HD	10	7.5	58/19	0.6/0.2	2.9/2.4	1.5/1.2	2.28 to 4.00 (2.28 to 5.00)	4.01 to 8.00 (5.01 to 8.00) OR 8.01 to 12.00	43.3 (51.2)	5.0 x 1	90 (108)	0.37 (1.0)
1/4	(N)ERP(ERG)003SD			29/10	0.6/0.2	2.9/2.4	1.5/1.2				5.0 x 1	90 (108)	0.37 (1.0)
1/4	(N)ERP(ERG)003HD			60/20	1.2/0.4	5.7/5.1	2.9/2.6				6.3 x 1	112 (132)	0.57 (1.2)
1/2	(N)ERP(ERG)005LD			14/5	0.6/0.2	2.9/2.4	1.5/1.2				6.3 x 1	95 (112)	0.57 (1.2)
1/2	(N)ERP(ERG)005SD			30/10	1.2/0.4	5.7/5.1	2.9/2.6				6.3 x 1	112(132)	0.57 (1.2)
1	(N)ERP(ERG)010LD			14/5	1.2/0.4	5.7/5.1	2.9/2.6	2.28 to 5.00	5.01 to 8.00 OR 8.01 to 12.00	51.2	8.0 x 1	128 (139)	0.93 (1.5)
1	(N)ERP(ERG)010SD			29/10	2.4/0.8	9.1/5.7	4.6/2.9				8.0 x 1	172 (183)	0.93 (1.5)
1 1/2	(N)ERP(ERG)015SD			20/7	2.4/0.8	9.1/5.7	4.6/2.9	3.23 to 6.02	6.03 to 12.00	59.1	10.0 x 1	203 (214)	1.5 (2.2)
2	(N)ERP(ERG)020LD			15/5	2.4/0.8	9.1/5.7	4.6/2.9				10.0 x 1	205 (216)	1.5 (2.2)
2	(N)ERP(ERG)020SD			29/10	4.7/1.6	19.6/9.4	9.8/4.7				10.0 x 1	322 (333)	1.5 (2.2)
2 1/2	(N)ERP(ERG)025SD	23/8	4.7/1.6	19.6/9.4	9.8/4.7	66.9	11.2 x 1			346 (357)	1.9 (2.6)		
3	(N)ERP(ERG)030LD	17/6	4.7/1.6	19.6/9.4	9.8/4.7		12.5 x 1			355 (366)	2.3 (2.9)		
3	(N)ERP(ERG)030SD	23/8	6.2/2.0	24.1/10.6	12.1/5.3	3.94 to 7.02	7.03 to 12.00	90.6	12.5 x 1	375(386)	2.3 (2.9)		
5	(N)ERP(ERG)050LD	12/4	4.7/1.6	19.6/9.4	9.8/4.7				11.2 x 2	463 (478)	4.0 (4.6)		

Figures in parentheses are data for geared trolley.

*Minimum flange width for curved beam: 1 Ton Push and 1/8 to 1 Ton Geared = 2.87 in.; 3 Ton Push and Geared = 3.50 in.

DUAL SPEED HOIST WITH PUSH TROLLEY—DIMENSIONS

Cap. (Tons)	Product Code	Headroom C (in)	a (in)	b (in)	e (in)	g (in)	h (in)	i (in)	j (in)	k (in)	m (in)	n (in)	r (in)	t (in)
1/8	(N)ERP001HD	15.4	8.0	7.2	1.8	0.9	3.2	2.36	0.7	3.0	1.9	3.3	1.5	0.87
1/4	(N)ERP003SD	15.4	8.0	7.2	1.8	0.9	3.2	2.36	0.7	3.0	1.9	3.3	1.5	0.87
1/4	(N)ERP003HD	16.1	8.0	7.2	1.8	0.9	3.2	2.36	0.7	3.0	1.9	3.3	1.5	0.87
1/2	(N)ERP005LD	15.4	8.0	7.2	1.8	0.9	3.2	2.36	0.7	3.0	1.9	3.3	1.5	0.87
1/2	(N)ERP005SD	16.1	8.0	7.2	1.8	0.9	3.2	2.36	0.7	3.0	1.9	3.3	1.5	0.87
1	(N)ERP010LD	18.1	9.8	9.3	2.2	1.2	4.2	2.80	1.1	3.7	2.2	4.4	2.0	0.98
1	(N)ERP010SD	19.5	9.8	9.3	2.2	1.2	4.2	2.80	1.1	3.7	2.2	4.4	2.0	0.98
1 1/2	(N)ERP015SD	21.9	11.8	11.0	2.7	1.3	5.0	3.35	1.3	4.4	2.8	5.2	2.4	1.26
2	(N)ERP020LD	24.6	11.8	11.0	2.7	1.5	5.0	3.35	1.3	4.4	2.8	5.2	2.4	1.26
2	(N)ERP020SD	28.9	11.8	11.0	2.7	1.5	5.0	3.35	1.3	4.4	2.8	5.2	2.4	1.26
2 1/2	(N)ERP025SD	28.9	12.6	12.8	3.1	1.6	5.8	3.94	1.4	5.3	3.1	6.0	2.7	1.42
3	(N)ERP030LD	30.3	12.6	12.8	3.1	1.7	5.8	3.94	1.4	5.3	3.1	6.0	2.7	1.42
3	(N)ERP030SD	30.3	12.6	12.8	3.1	1.7	5.8	3.94	1.4	5.3	3.1	6.0	2.7	1.42
5	(N)ERP050LD	34.8	11.7	15.7	2.1	1.8	6.7	4.65	1.8	5.7	3.2	7.0	3.5	2.13

DUAL SPEED HOIST WITH GEARED TROLLEY—DIMENSIONS

Cap. (Tons)	Product Code	Headroom C (in)	E (in)	a (in)	b (in)	e (in)	g (in)	h (in)	i (in)	j (in)	k (in)	k' (in)	m (in)	n (in)	r (in)	t (in)	u (in)
1/8	(N)ERG001HD	16.1	10.5	13.6	9.3	6.0	0.9	4.2	2.80	1.1	3.7	4.2	2.2	4.4	2.0	0.98	7.2
1/4	(N)ERG003SD	16.1	10.5	13.6	9.3	6.0	0.9	4.2	2.80	1.1	3.7	4.2	2.2	4.4	2.0	0.98	7.2
1/4	(N)ERG003HD	16.9	10.5	13.6	9.3	6.0	0.9	4.2	2.80	1.1	3.7	4.2	2.2	4.4	2.0	0.98	7.2
1/2	(N)ERG005LD	16.1	10.5	13.6	9.3	6.0	0.9	4.2	2.80	1.1	3.7	4.2	2.2	4.4	2.0	0.98	7.2
1/2	(N)ERG005SD	16.9	10.5	13.6	9.3	6.0	0.9	4.2	2.80	1.1	3.7	4.2	2.2	4.4	2.0	0.98	7.2
1	(N)ERG010LD	18.1	10.5	13.6	9.3	6.0	1.2	4.2	2.80	1.1	3.7	4.2	2.2	4.4	2.0	0.98	7.2
1	(N)ERG010SD	19.5	10.5	13.6	9.3	6.0	1.2	4.2	2.80	1.1	3.7	4.2	2.2	4.4	2.0	0.98	7.2
1 1/2	(N)ERG015SD	21.9	10.5	15.2	11.0	6.1	1.3	5.0	3.35	1.3	4.4	4.3	2.7	5.2	2.4	1.26	7.2
2	(N)ERG020LD	24.6	10.5	15.2	11.0	6.1	1.5	5.0	3.35	1.3	4.4	4.3	2.7	5.2	2.4	1.26	7.2
2	(N)ERG020SD	28.9	10.5	15.2	11.0	6.1	1.5	5.0	3.35	1.3	4.4	4.3	2.7	5.2	2.4	1.26	7.2
2 1/2	(N)ERG025SD	28.9	11.0	15.7	12.8	6.2	1.6	5.8	3.94	1.4	5.3	4.5	3.1	6.0	2.7	1.42	7.2
3	(N)ERG030LD	30.3	11.0	15.7	12.8	6.2	1.7	5.8	3.94	1.4	5.3	4.5	3.1	6.0	2.7	1.42	7.2
3	(N)ERG030SD	30.3	11.0	15.7	12.8	6.2	1.7	5.8	3.94	1.4	5.3	4.5	3.1	6.0	2.7	1.42	7.2
5	(N)ERG050LD	34.8	11.4	15.8	15.7	6.1	1.8	6.7	4.65	1.8	5.7	5.2	3.2	7.0	3.5	2.13	7.2

